

Distributed Combination I/O

The rugged Distributed Combination I/O module (DCIO) provides eight isolated analog inputs – 300V dc channel-to-channel - as well as eight isolated discrete inputs and outputs.

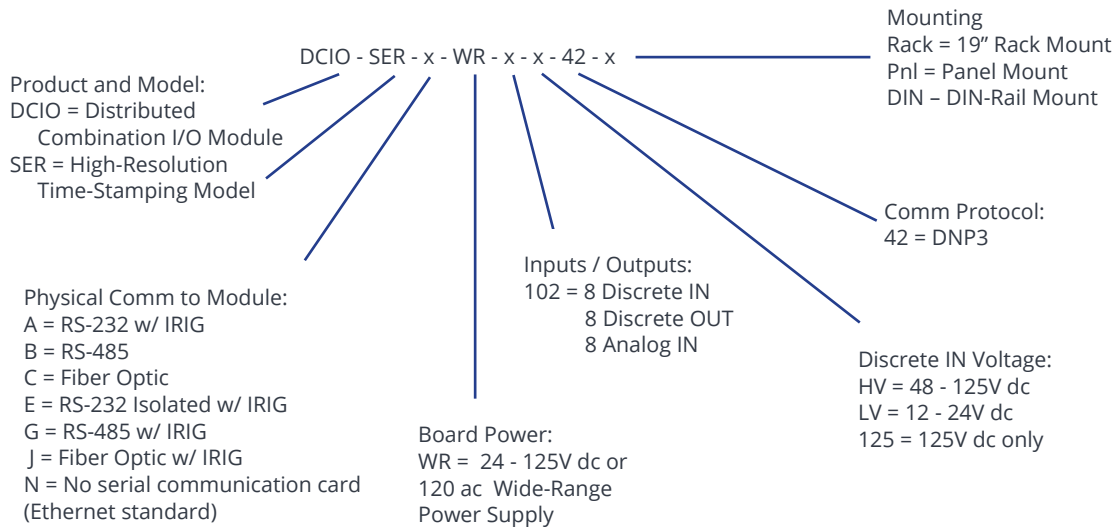
Distributed DCIO modules can be wired back to any RTU or PLC supporting the DNP3 protocol using an RS-232, RS-485, fiber optic or Ethernet connection.

The DCIO, along with the Distributed Discrete I/O module (DDIO) provide security features to meet NERC CIP requirements, including strong passwords, user groups, encrypted protocols and firewall.



16 in / 8 out Distributed Discrete I/O Module, Panel or DIN-rail mount

Product Part



Environmental and Immunity Operating Temperature Range: -20° to +70°C; Tested to IEEE C37.90.1, 2 and 3 surge

Comm. Protocol DNP3 to module for status and control. Unsolicited Report-by-Exception (URBE) supported; Set Time on module supported; Serial baud rate set up to 57.6kb, Ethernet 10/100M Baud rate

Configuration Simple Mode: Set address and comm parameters with DIP switches. Advanced Mode: Set advanced comm parameters through webpages served from module

Discrete Inputs/Outputs 8 in / 8 out @ 12, 24, 48 or 125V dc (+/- 20%). Other configurations available by special order. Input circuit draw: 2mA Output relays: Heavy duty protective relay-grade 10A for direct connection to circuit breaker trip coils Removable Phoenix Type Screw Terminals, 12 to 24AWG

Mechanical 10 Million no load operations

Make 30A @ 180V dc per IEEE C37.90

Breaking Capacity (10,000 operations) .3A at 125V dc per IEC 60255-0-20:1974

Cyclic Capacity (2.5 cycles/second) .3A at 125V dc per IEC 60255-0-20:1974

Analog Inputs

+/- 2mA for "-1mA to +1mA" and "0 to 1mA" applications
 +/- 20mA for "4 to 20mA" applications
 +/- 10V for "0 to 10V", "0 to 5V" applications

Analog Inputs Selection

Inputs individually selectable per point
 Inputs selection with individual slide switch

Analog Specifications

Input Impedance
 0-10V: 10KW
 0-1mA: 500W
 4-20mA: 50W

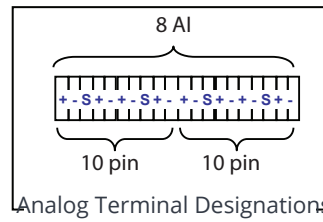
Overall accuracy
 +/- .2% V
 +/- .2% A

Temperature Coefficient
 +/- 100ppm per degree C

Overload Range
 0-10V: -12.5V to +12.5V
 0-1mA: -2.5mA to +2.5mA
 4-20mA: 0mA to 25mA

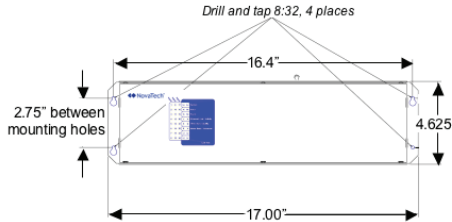
Isolation
 Channel to channel: 300V dc
 Input to chassis: 3000V dc

Rejection
 Minimum common mode rejection of 115dB
 Minimum differential mode rejection (60Hz) of +60dB

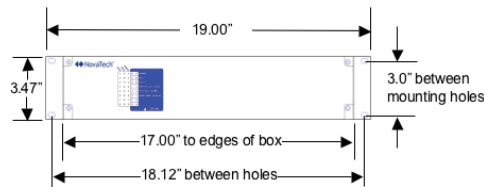


Dimensions and Mounting

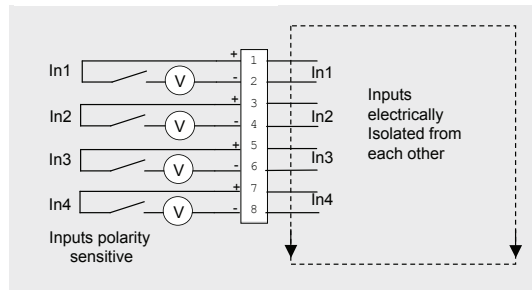
Dimensions for panel and DIN-rail mounting:
 (17.00" wide x 4.625" high x 3.50" deep)



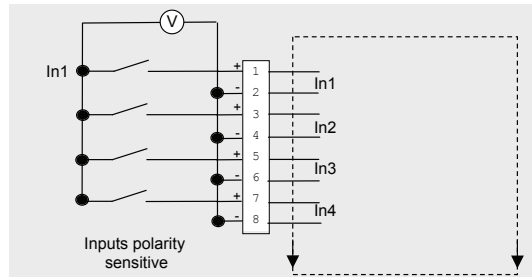
Dimensions for 19" rack mounting:
 (19" wide x 3.47" high x 7.00" deep)



Discrete Circuit Diagram



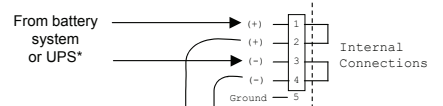
Input circuit showing independent and isolated circuits



Input circuit showing bussed connections for providing wetting voltage

DC Power Input
 19VDC to 145VDC
 (24VDC or 125VDC nominal)

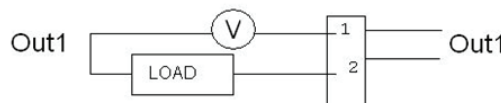
Also Supports
 115VAC nominal



To next DDIO SER module

*Module internally fused

Circuit Diagram - Outputs



novatechweb.com



Copyright © 2020 NovaTech, LLC. All rights reserved. All brand and product names mentioned in this document are trademarks of their respective owners. NovaTech is a registered trademark of NovaTech, LLC. The information in this literature is subject to change without notice and is not to be construed as a warranty. DS_DCIO_032720