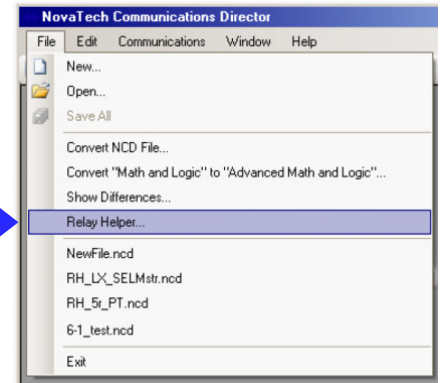
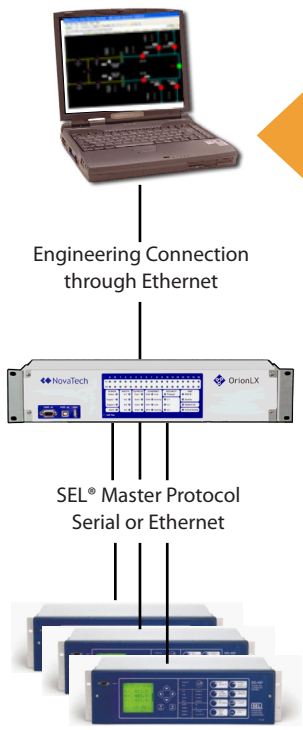


NovaTech currently provides over 200 pre-engineered SEL® “point pick lists” (or “Default Files”) to simplify the process of selecting points from SEL® relays. When new SEL® relay model variations are introduced, NovaTech Engineering, or the user, creates a new Default File for that specific new relay model. **OrionLX Relay Helper simplifies the Default File creation process** by automating the extraction of SEL® relay “ID” and “DNA” from the new relay model. Using these data, Relay Helper automatically creates the new complete and accurate Default File. The entire process only takes a few minutes.

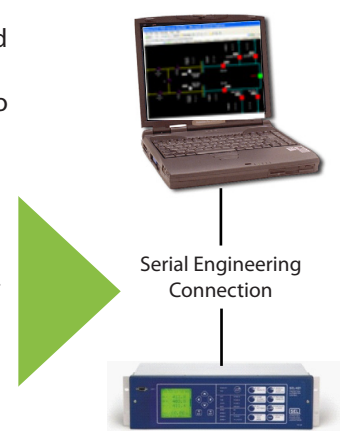
New



Relay Helper includes **four software wizards**. Each wizard addresses a different connection scenario for Default File creation:

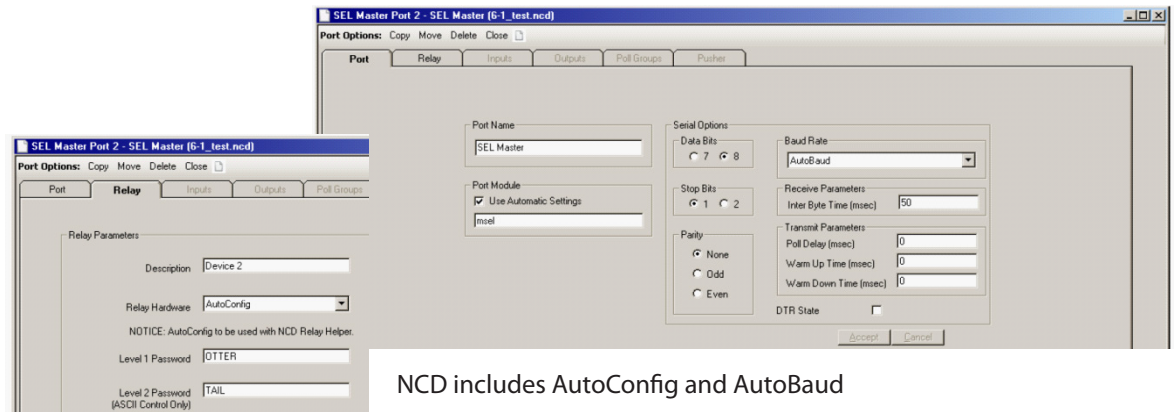


**Wizard 1 and 2** are both used when the user PC is connected to the OrionLX through Ethernet and the OrionLX is connected to the relay. Relay ID and DNA are automatically extracted from the relays. Wizard 1 creates a new NCD file and Default Files with “found” relays; Wizard 2 adds “found” relays and Default Files to an existing NCD file.



**Wizard 3** is used when the user PC is connected directly to the relay through a serial port. Relay ID and DNA are automatically extracted from the relay and a Default File for the connected relay is created and added to NCD.

**Wizard 4** is used when the PC is offline and has a copy of the relay ID and DNA in a text file. A Default File for the relay is created and added to NCD.

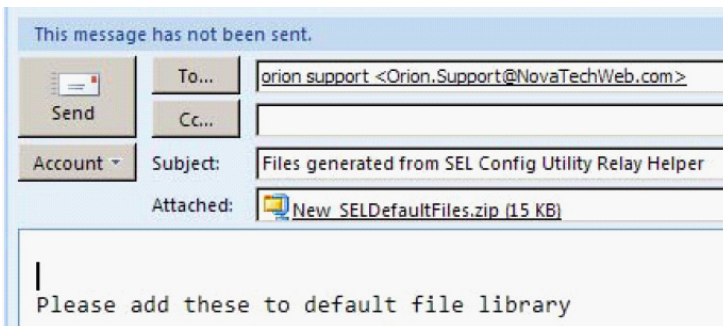


NCD includes AutoConfig and AutoBaud



Model	Firmware	New File?	User Default File
421 R111 RELAY	SEL-421-R111-V0-Z003004-D20040602	Yes	C:\Documents and Settings\toms\My Documents\NCD\UserDefaultFiles\SEL_421_R111.csv
321-1 R406 RELAY	SEL-321-1-R406-V656112pb-D950627	Yes	C:\Documents and Settings\toms\My Documents\NCD\UserDefaultFiles\SEL_321-1_R406...

Relay Helper™ creates new Default Files for SEL® relays and adds to NCD User Default Files.



Relay Helper starts an email that can be sent by the user for any new Default Files that are created so they can be added into the master list of default files provided in NCD.

### Guidelines for Application of Relay Helper™

1. The SEL® relay must support Fast Meter and the "ID" command
2. Wizard 1 and 2 are not designed to work with Cascaded OrionLX configurations
3. For a new Default File to be created, a Default File for a relay of that "family" must already exist in NCD. Example below:

SEL_311_R214	8/30/2011 1:55 PM	MICROSOT OFFICE E...	43 KB
SEL_311A_R105	8/30/2011 1:55 PM	Microsoft Office E...	37 KB
SEL_311B_R102	8/30/2011 1:55 PM	Microsoft Office E...	36 KB
SEL_311B_R106	8/30/2011 1:55 PM	Microsoft Office E...	37 KB
SEL_311C_R109	8/30/2011 1:55 PM	Microsoft Office E...	37 KB
SEL_311L_R155	8/30/2011 1:55 PM	Microsoft Office E...	44 KB
SEL_311L_R206	8/30/2011 1:55 PM	Microsoft Office E...	43 KB
SEL_311L-1_R212	8/30/2011 1:55 PM	Microsoft Office E...	43 KB
SEL_311L-1_R213	8/30/2011 1:55 PM	Microsoft Office E...	43 KB
SEL_311L-1_R406	8/30/2011 1:55 PM	Microsoft Office F	44 KB

Relay Helper will create additional Default Files for relays that are in a "family" designated by these first digits.

### Ordering Relay Helper™

Relay Helper is included in the SEL® Master protocol (order code #14)

#### Contact: