

Typical IED Configuration

NovaTech Communications Director (NCD) is a powerful software package for programming the Orion family of Automation Platforms. Users are able to configure multiple protocols without the need for tedious programming or scripting. NCD was developed to be easy to learn and use without any formal training.

The intuitive interface configuration reduces the amount of time required to configure a communication processor. Setup is simplified by our extensive library of substation device profiles. Individual data points are selected using scroll down pick lists.

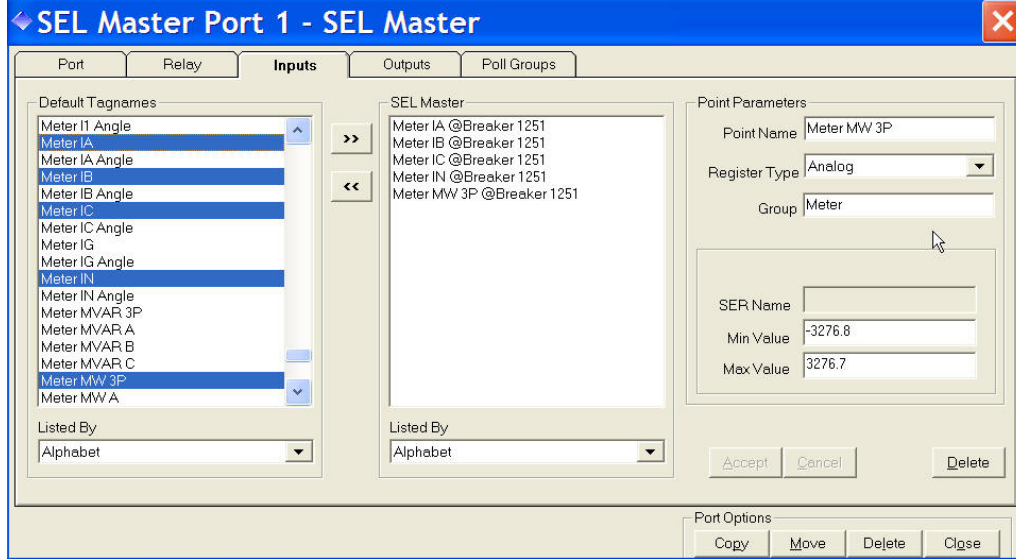
IEDs are configured by selecting the device's manufacturer and model and then the individual data points available from that device. This method not only makes it unnecessary to enter data manually, but also picks up device specific characteristics. Highlighted data values are transferred to a common database, which is the repository for all data retrieved by the Orion.

RTUs are also configured with a pick list, selecting from the common database tagnames. Values are moved to the RTU database by highlighting and selecting the tagnames of the desired values. Manual entry of tagnames is not required.

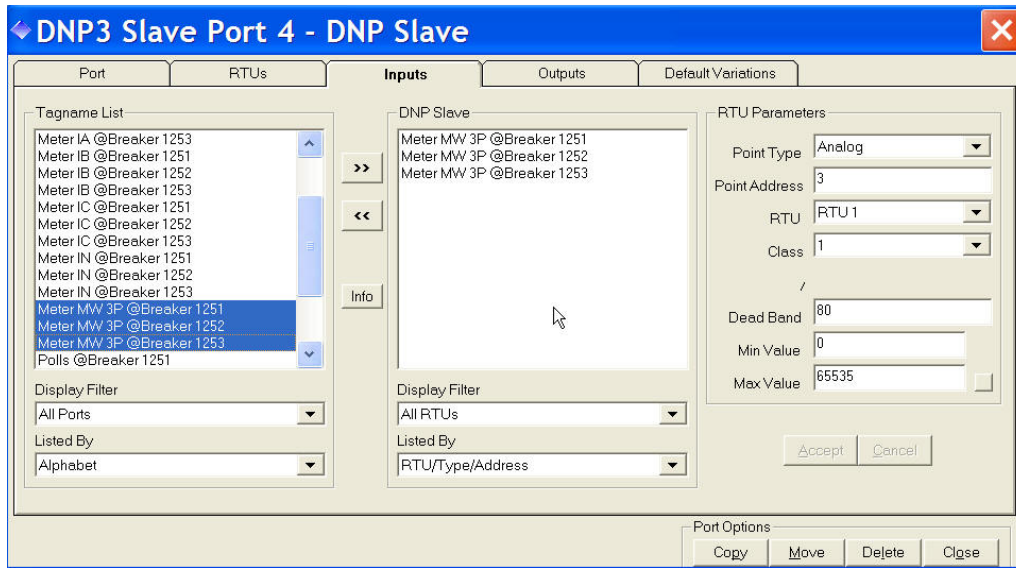
After the NCD file is created and saved, it is transferred to the Orion using the Zmodem file transfer protocol. Online diagnostics can also be accessed using this terminal functionality.

Highlights

- Pick List Configuration – NCD features an extensive library of IED profiles for the utility industry. User can create IED profiles using common spreadsheets to further extend NCD's compatibility.
- Four models, one program – The Orion5, Orion5r, OrionLX and Orion16 are all configurable through NCD.
- No Licensing Fees – One copy of NCD is provided with each Orion Automation Platform and may be operated by multiple users.
- Terminal Software – Terminal window with file transfer functions.
- ASCII File Format – NCD saves configuration parameters to an ASCII file that can be viewed with any text editor or spreadsheet.
- Compatibility – NCD runs on Microsoft Windows 95 or higher.



IED point selection. NCD is provided with "pick lists" for all major IEDs



SCADA point selection. NCD enables multiple SCADA Masters to each access a subset of points in the Orion database

Contact:

NovaTech, LLC
Orion Utility Automation
13555 West 107th Street
Lenexa, KS 66215

T: 913.451.1880
F: 913.451.2845
E: orion@novatechweb.com
www.novatechweb.com