

NovaTech's ProcessVision™ Console software provides comprehensive information to operations, engineers, production staff and management. Easy to use, easy to configure "Standard Displays" ensure that the user is informed and able to make effective decisions related to plant process and D/3 system performance.

System managers are able to quickly create and organize thousands of informative displays without drawing, programming or scripting. In fact, many ProcessVision displays require no configuration at all.

ProcessVision features intuitive navigation, comprehensive security, and tight integration with NovaTech's TotalVision® high performance graphics engine. This combination provides an organized, efficient and cost effective method to manage and display pertinent system information and control plant operations.

Users enjoy the rich and intuitive HMI experience; system managers appreciate the sophisticated security model, object reuse, and ease of configuration.

Key Features

- Easy to use
- Easy configuration
- Requires no drawing or scripting
- Compatible with: Windows 7, Windows XP, Windows 2003, and Windows 2008
- Multiple, scalable windows per console session
- One license = multiple windows on multiple monitors
- Intuitive browser-like "tabbed" display
- Immediate access to all tags system wide
- Easy management of recipe and batch data
- Session and Favorites management
- Extensive font and color customizability
- Print scheduling of any screen
- Unlimited simultaneous console sessions
- Intuitive features:
 - > Mouse-centric navigation
 - > Combo-box drop down lists
 - > Auto-complete text entry
 - > Extensive sorting capability
 - > Right mouse click to access menus
 - > Tool tips and comprehensive help
- Navigate by display, name or number



Hardware

- No proprietary computer hardware required
- Compatible with:
 - > High availability computing platforms
 - > Virtualization
 - > Desktop and laptop PC's
 - > Thin clients
 - > Remote desktop
 - > Tablets and Smart-Phones via RDP

Security

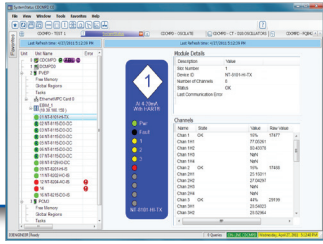
- 21 CFR Part 11 compliance features
- Comprehensive security management:
 - > Microsoft Windows security model
 - > Local Accounts, Active Directory and Domains
 - > Granular permissions by console # and UserName
 - > Control specified Process Units at designated consoles
 - > Direct alarms and messages to designated consoles
 - > Detailed logging of all actions



Display Types Provided by D/3® ProcessVision Console Software

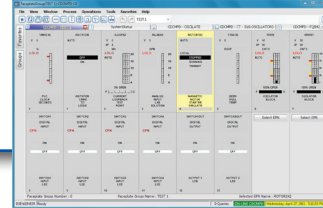
System Status

- No configuration required
- Quickly determine status of all D/3 nodes
- Ability to drill down from Server to I/O module level
- Dynamic information to the I/O point level
- Tree view provides rolled up status for system nodes
- Pane on right displaying respective information from selection on left



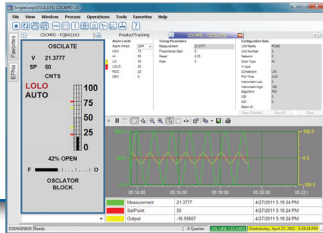
8 Over 8 Faceplate

- Intuitive display of up to 16 EPNs (Tags)
- Create thousands of unique Faceplate groups
- Select groups by name, number, or both
- Use a text filter to find the desired group
- Easy to type, insert or replace EPNs (Tags) in a group
- Right click access to single loop, loop maintenance, and trending
- Right click on content sensitive hot spots to change set-points, auto-manual status, and acknowledge alarms
- Easily page forward and backward through faceplate group screens



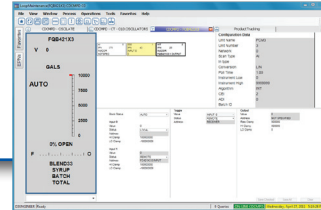
Single Loop

- No configuration required
- Drill down from Faceplate Groups or Loop Maintenance display or access via menu
- Provides high level parameters for each and every EPN (Tag) on the D/3 System
- Provides a means to modify EPN (Tag) alarm limits and tuning parameters
- Displays a trend to facilitate troubleshooting and loop tuning
- Prompts when leaving tab without first saving changed parameters to disk



Loop Maintenance

- No configuration required
- Drill down from Faceplate, Single Loop, or access via menu
- Display detailed parameters for every block in all analog loops and parameters associated with all digital EPNs on the D/3 System
- Provides a means to modify parameters, if permitted
- Prompts when leaving tab without first saving changed parameters to disk



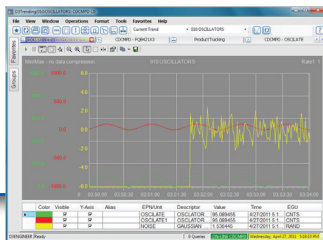
Annunciator Panel

- Provides quick view of operators area of responsibility
- Expands operator's effective area of responsibility when coupled with NovaTech State based control programming model
- Can be configured to perform functions such as:
 - > Start or stop a program
 - > Change a variable
 - > Navigate to a D/3 display

Group	Label	Unit
FLAVOR0	COOK0	EVAP01
FLAVOR0	COOK0	MM1
BLEND01	COOL0	EVAP02
BLEND01	COOL0	LTO
BLEND02	EXCH0A	EVAP03
BLEND02	EXCH0A	BK01
BLEND03	EXCH0B	EVAP04
BLEND03	EXCH0B	BK02
BLEND04	MLINE	EVAP05
BLEND04	MLINE	WFO
HOLD01	FERM01	EVAP06
HOLD01	FERM01	BHBC01D
HOLD02	FERM02	CENT01
HOLD03	FERM03	CENT02
HOLD04	FERM04	DRYER01A
TRANSFER01	VCASD	DRYER01B
BOTTLE01	SCRUB01	ESD0100
BOTTLE02	SCRUB02	ESD0100
BOTTLE03	EFFECT01	CIP000
BOTTLE04	DIST0	CIP000
BOTTLE05	MOLE05	EXCH0A
BOTTLE06	OXY0	EXCH0B

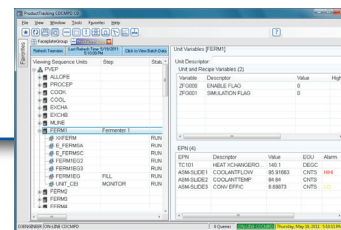
Trend Visualization

- Pre-configure thousands of unique trend display groups
- Interactively select up to 8 points to plot from the many points available in a group
- Pan, Zoom, Hover (data cursor), modify x or y axis
- Export data to file or Excel
- Save data to clipboard
- Print data or graph
- Save graph (picture) to clipboard



Product/Batch Tracking

- Show information related to batch and recipe processing
- Show batch ID, start & stop times, report info, Lot ID, etc.
- Easy access to Batch History, Operator comments, and Lot Events files
- Display all equipment allocated to a batch
- Display every Process Unit on the entire D/3 System
- Show and control SABL® programs running on each unit
- Display and modify unit and recipe variables
- Provides access to routine recipe functions



Contact:

NovaTech, LLC
 D/3 Process Control
 11500 Cronridge Drive, Ste. 110
 Owings Mills, MD 21117

T: 410.753.8300
 F: 410.753.8395
 E: d3@novatechweb.com
www.novatechweb.com