

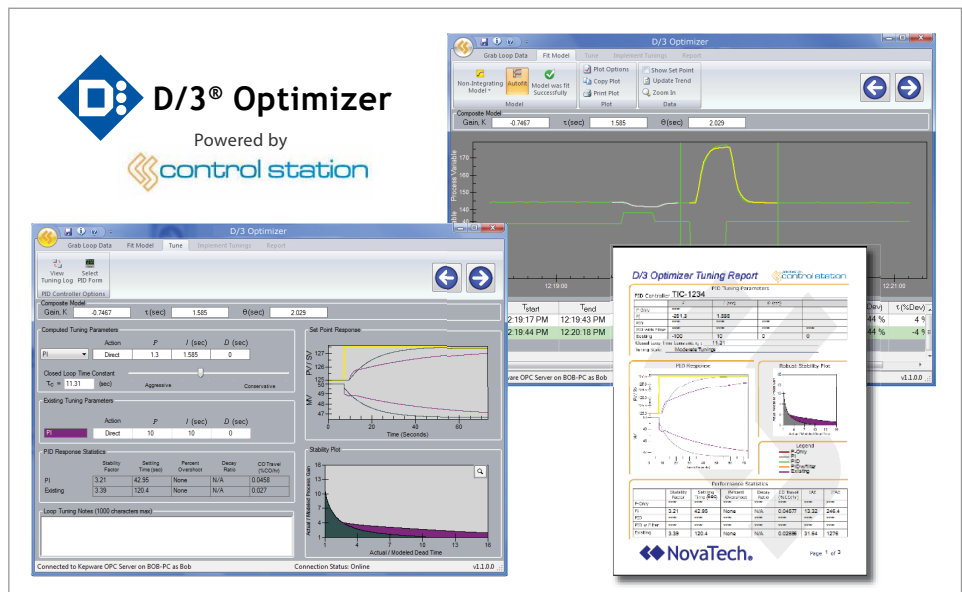
NovaTech and Control Station Form Partnership

PID Tuning Solution dubbed “D/3® Optimizer”

NovaTech is pleased to announce the formation of a strategic partnership with Control Station, Inc. Through our partnership, Control Station will introduce a high performance and fully integrated PID tuning solution to users of NovaTech’s D/3 Distributed Control System. The product will enhance the performance of D/3 systems with Control Station’s patent-pending modeling and tuning technologies. Control Station is a recognized leader in PID diagnostic and optimization solutions. Their award-winning technologies are used by leading process companies globally. Control Station also supports the training and skills development needs of nearly 150 colleges and universities worldwide.

Named “D/3® Optimizer”, the software will allow users to engage in the most effective and efficient PID optimization available. This innovative technology offers practitioners significant improvement over other PID tuning products. D/3 Optimizer includes seamless integration with D/3 installations and a unique ability to accurately model and tune both transitional and noisy process data. The product fully leverages Control Station’s patent-pending Non-Steady-State (NSS) Modeling Innovation.

D/3 Optimizer is tightly integrated into D/3 Console software. While viewing a “Single Loop” or “Loop



Maintenance” display, the user will simply click on the D/3 Optimizer menu item. The system will automatically launch D/3 Optimizer and begin collecting tuning data for the appropriate D/3 EPN.

The software automatically creates a highly accurate mathematical model of loop dynamics based on the collected data. Users may then tune the loop using an intuitive user interface. Users can apply conservative through aggressive tuning parameters using a simple slider bar tool.

The software provides graphical representation of loop performance and stability based on the selected tuning constants. Users can easily perform “what if” experiments to optimize loop performance to fit their needs.

End-users will see improvement in profitability in the form of increased lifespan of plant equipment, improved product quality, and reduced energy consumption. D/3 Optimizer software will run on any D/3 Console (Version 12.0 and newer) and will be offered to all customers in April of 2009. D/3 Optimizer will be offered to NovaTech D/3 customers on a separate installation CD. The CD will contain an installation kit for use on any D/3 Console, DCM, or CDCM. The CD will also include a temporary DEMO license that will allow a user to try the product on their system.

NovaTech will be offering Node (single computer), and Floating (multiple computer) and Temporary Startup licenses for the D/3 Optimizer product. Please contact your NovaTech Sales representative for pricing and availability of the D/3 Optimizer product.

In lean times, a plant managers' priorities must necessarily shift from managing the growth and expansion resulting from new opportunities to minimizing risk, improving margins, and ensuring that an operation is not dealt a crippling blow by a catastrophic failure. NovaTech offers a number of solutions to help customers preserve, extend, and optimize their existing assets and improve their personnel skill levels. The return on investment for any of these offerings can typically be realized in months rather than years, and all can provide strategic advantage with relatively small up front investment.

Energy Asset Management Solution

The NovaTech Energy Asset Management Solution (EAMS) turns the challenges of rising and volatile energy costs into an opportunity for competitive advantage. EAMS allows management of a process in real-time economic context of energy costs, emissions, and asset utilization. Plant managers can set energy strategies based on historical baselines, and operators can run the process to meet energy usage goals through customizable smartboards of Key Performance Indicators (KPIs). Advanced Process Control (powered by industry leader AspenTech) automatically smoothes control profiles and lowers costs with

feed-forward control strategies.

Power & Grounding and RC-SLP

NovaTech engineers have a well-deserved reputation for thorough attention to detail and comprehensive understanding of the process control environment. Power & Grounding Analyses ensure that equipment and networks function optimally, and Reliability-Centered System Life Planning (RC-SLP) surveys all aspects of a process control system. Every CPU, network connection, software patch level and hundreds of other points are inventoried, compared against Mean-Time Between Failure data for each component, and analyzed for wear and tear. The resulting System Life Plan allows maintenance to shift from a reactive to proactive stance, maximizes equipment life by avoiding premature replacement, and provides peace of mind to plant managers worried about what they don't know.

HART® Diagnostic Data from 8000 Series I/O

HART data available from the 8000 Series I/O, coupled with Endress + Hauser's industry-leading Fieldcare package, is another essential tool to maintain the highest levels of reliability. Upgrading from 16000 or 505 I/O

is made quick and easy (and affordable) by retrofit panels that preserve original wiring and grounding connections.

Alarm Management

Avoiding big problems requires filtering out the small ones. The balance between not enough alarms and too many is difficult to strike, especially during abnormal operations. Knowing what the real hot spots are requires experience, judgement, and a sound Alarm Management Strategy. NovaTech provides Dynamic Alarm Management, Alarm Suppression, and Alarm Inhibit to filter the critical alarms from the chatter, helping operators to appropriately prioritize alarms and focus on the big problems.

Customized Operator Training

When it comes to competitive advantage, it helps to have a good control system, but it is essential to have good people with up-to-date skillsets. NovaTech Educational Services provides a comprehensive range of D/3®, Microsoft®, Cyber Security, process control and utility automation courses that can be taught at our facilities or yours by instructors who are always welcomed back.

ETHANOL SIMULATOR SOLD

Northeast Community College received a Dept of Labor grant to purchase a D/3® NETS (NovaTech Ethanol Training Simulator) and accompanying curriculum developed by NovaTech partner Minnesota West Community & Technical College.

Northeast has installed a new computer room to accommodate the simulator, and a strong demand for the class is anticipated from students starting classes in April.



When a NovaTech customer chose D/3® as the control platform in four of their newest processing plants, they decided to consolidate their efforts by adopting a common architecture for their Sequence Databases, SABL® programs, Master Devices, TotalVision® SGOs and certain control loops. Two of these new plants use FlexBatch® for recipe control of the batch processes, so the application architecture must support multiple SABL Phase programs running simultaneously within a unit.

The customer is now able to use these structures in each of the new facilities, reducing the cost of application development and providing more

robust and predictable controls and user interfaces.

This new Flex application standard developed with NovaTech applications engineers can be used for both FlexBatch and non-FlexBatch systems. The characteristics of NovaTech's SC/SA standard were carried forward into this new standard, including a unit-based approach to process control, the ability to swap SABL programs in a live process with predictable behavior and results, support for Hold and Continue logic, and a common look and feel to every program. Application developers from any one of these facilities can step into any of the other facilities and

hit the ground running. Entire SABL phase programs were simply copied from one FlexBatch system to the other where they compiled and ran without any modifications.

NovaTech trained the customers' development teams in the use of the new standard using their process application for examples and training exercises, killing two birds with one stone – training the team and developing the plant application at the same time. NovaTech also helped with unit definition and unit boundary decisions, provided technical guidance and conducted code reviews to ensure adherence to the standard.

BUZWORDS

Dear Valued NovaTech Customer,

The economic downturn is continuing to affect every industry sector and business process, and while NovaTech's growth in 2009 is unlikely to match the previous four years', we still expect to see positive growth to our bottom line. We'd like to acknowledge and thank all our customers for their continued business, and renew our commitment to provide you with tools and services of immediate interest and benefit to you in coping with fiscal uncertainty.

Due to a variety of reasons, the four day travel requirement of our User's Conference is difficult to justify under the current economic conditions. We are therefore postponing the conference until May of 2010. In the meantime, we are planning a series of five one- to two-day technical symposiums that will bring the product developments, presentations and

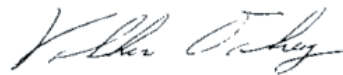
instructional sessions of the User Conference to within driving distance of our customers' facilities. Sales personnel will be in touch with specific dates and locations in the near future.

Turbulent times call for a responsive technology partner. NovaTech is big enough to handle the most ambitious automation projects, and small enough to care about how each one is executed. Our people, technology, and partnerships are all focused on one goal: making our customer's process more reliable, more efficient, and adaptive to change. That's something of value in any economy.

Sincerely,



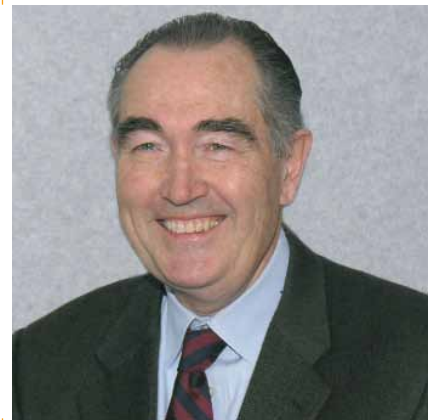
Buz Zey, President



Volker Oakey, CEO



Buz Zey, President



Volker Oakey, Chairman

Ongoing Webinar Series: 8000 Series I/O

Two years after its debut, sales of 8000 Series I/O are going strong, supported by the “plug-and-play”-like retrofit panels for 16000 and 505 I/O, and a series of online webinars hosted by Leo Charpentier, Director of Product Development for Process.

The first webinar covered the following topics:

- Key I/O Family Features
- I/O Architecture
- Communication Controllers (EBIMs) Modules
- I/O Network Basics

Materials from the first webinar are available for download in the Customer website under > Products > I/O.

Part 2 - April 28th

The second webinar will discuss upgrading from 16000 Series I/O, TI/Simantic 505 I/O and Modicon 200 Series I/O

Contact Penny.Newton@novatechps.com to attend.

SAVE THE DATE

March 20 Southeast Technical Symposium,
Aiken, SC

April 23 South Central Technical Symposium,
Gonzales, LA

IN THIS ISSUE

- **Feature:** Control Station Partnership
- **Strategies for a Down Economy:** Process Automation Investments That Pay Today
- **Simulator Sold:** NovaTech Ethanol Training Simulator (NETS) installed at Northeast Community College
- **Flex Standards:** Overview and Benefits

Copyright ©2009 NovaTech, LLC. All rights reserved. D/3, SABL and TotalVision are registered trademarks of NovaTech Process Solutions, LLC. NovaTech is a registered trademark of NovaTech, LLC. All other trademarks and/or registered trademarks are the property of their respective owners.

 **NovaTech**[®]
Corporate Communications
11500 Cronridge Drive, Suite 110
Owings Mills, MD 21117

FIRST CLASS
PRESORTED
US POSTAGE
PAID
WILKES-BARRE, PA
PERMIT NO. 413