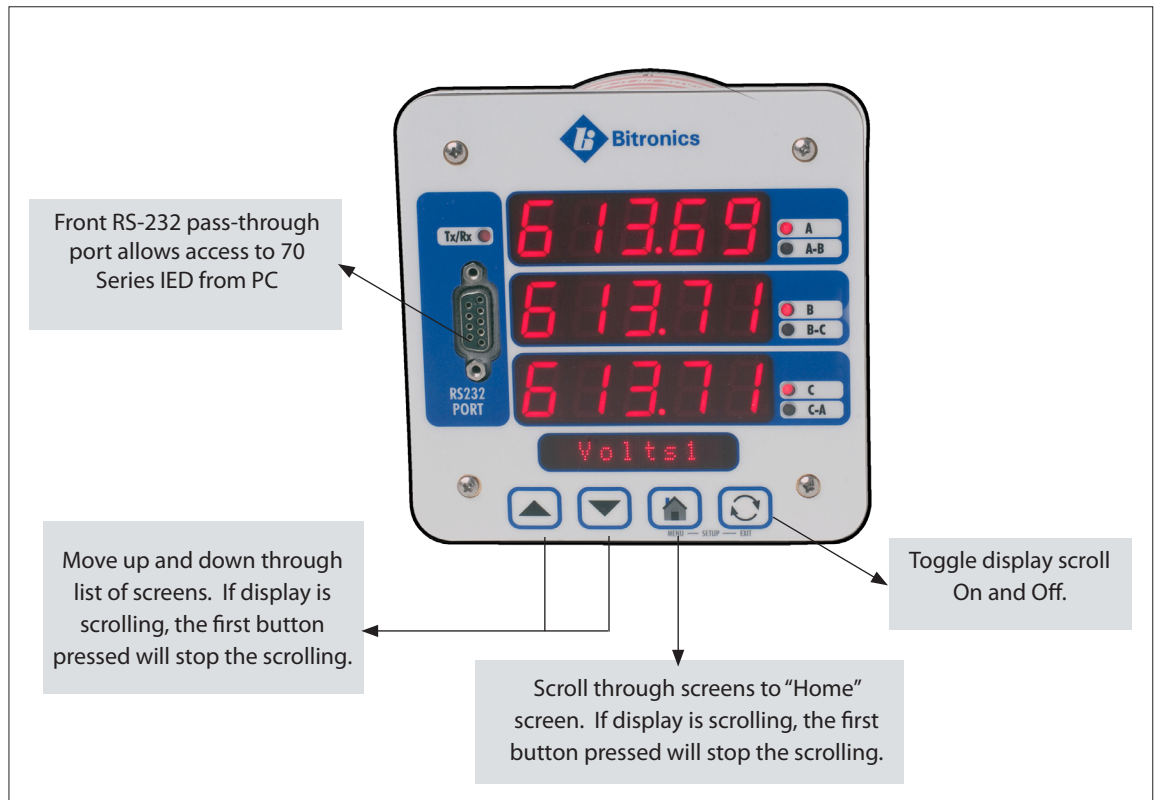




The Bitronics M870D provides users of the 70 Series IEDs the option of a local or remote display of measured or calculated parameters.

**Features**

- Rugged aluminum 4" (101,6 mm) round case
- Bright, high-efficiency, high reliability LED's
- Three lines displayed simultaneously
- High resolution: Five significant digits per line
- Pre-set engineering units or customized text automatically displayed
- Buttons allow for scrolling to desired parameter, or can be set for continuous looping of parameters
- DB9 pass-through front port allows direct hookup to any 70 Series IED from front of display for easy configuration and file download between the 70 Series IED and PC
- Selectable RS-232 or RS-485 connection from any 70 Series IED
- Up to 15 displays can be supported over any of the RS-485 ports by each 70 Series IED





# Bitronics M870D

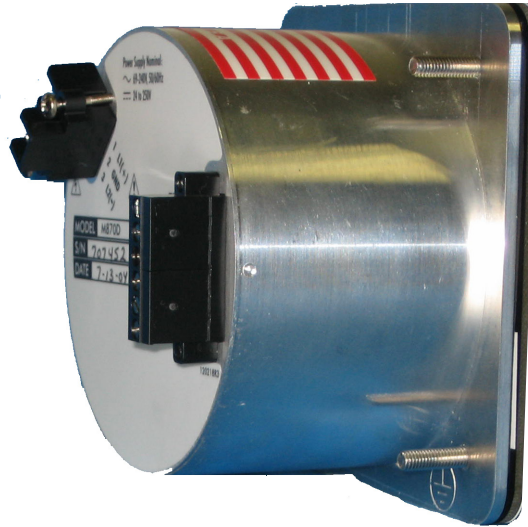
## 70 Series Display

### Design

The Bitronics M870D fits in a standard 4" (101,6 mm) round opening and features a very low profile (only 3.5" (88,9 mm) behind panel).

Other design features include:

- -40C to +70C operating temperature
- Wide range universal power supply (nominal 24-250V dc/69-250V ac)

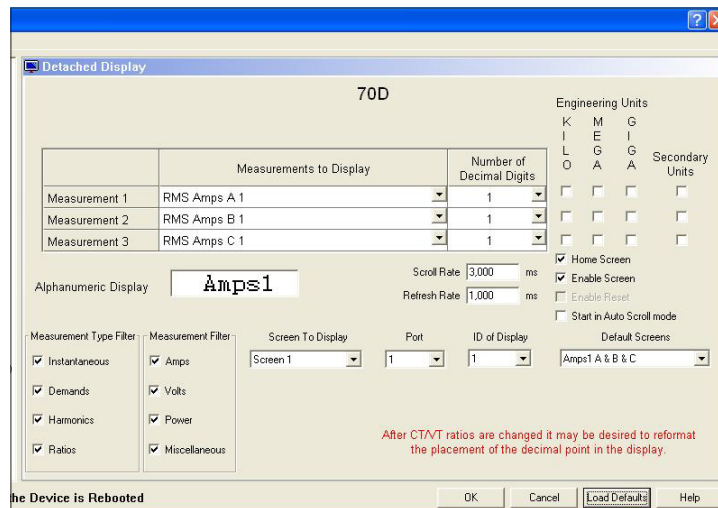


### Configuration

The Bitronics M870D can be easily configured through the supplied Windows® based 70 Series Configurator.

This provides:

- Selection of parameters to be displayed
- Selection of decimal place
- Ability to add special characters



Configuration of the M870D with 70 Series Configurator

### Contact:

NovaTech, LLC

Bitronics Measurement and Recording

261 Brodhead Road  
Bethlehem, PA 18017

T: 610.997.5100

F: 610.997.5450

E: [bitronics@novatechweb.com](mailto:bitronics@novatechweb.com)

[www.novatechweb.com](http://www.novatechweb.com)