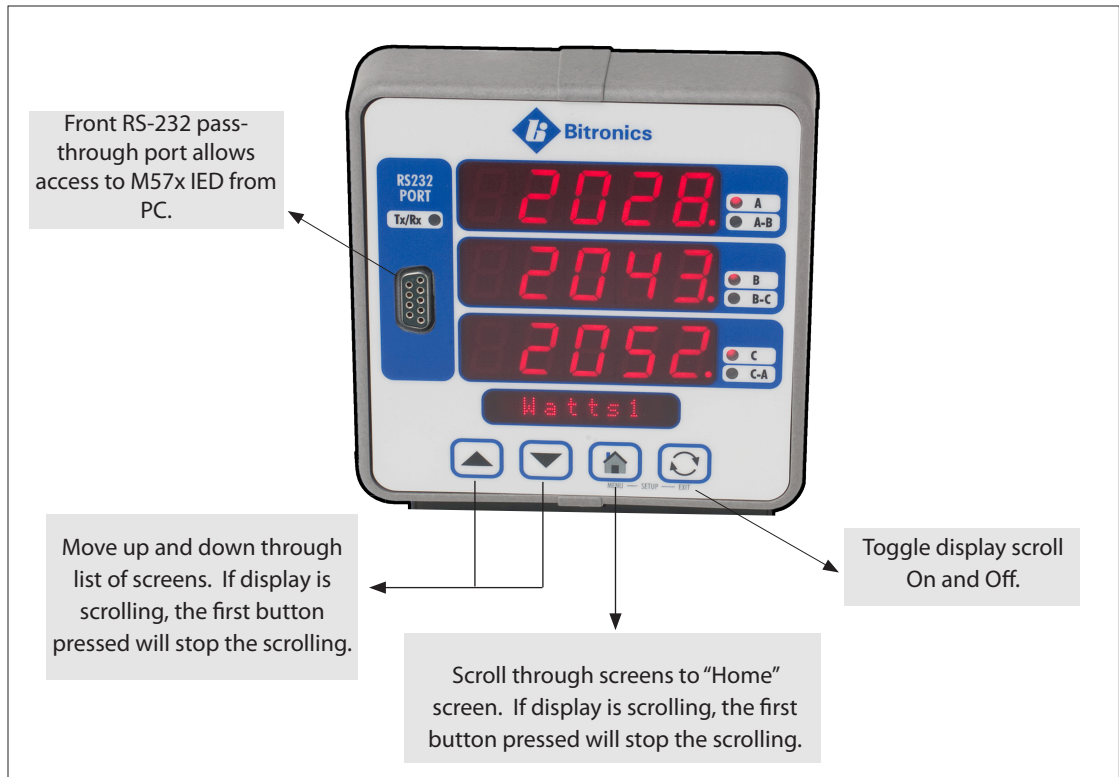




The Bitronics M570DA provides users of the M57x Compact Family of IEDS the option of a local or remote display of measured or calculated parameters. The M570DA replaces the M570D and with use of a separate adapter allows two displays to be supported from the P1 port of any M57x IED.

Features

- Surface mounts over a 4" round or DIN 92mm opening
- Three lines displayed simultaneously
- High resolution: Five significant digits per line
- Pre-set engineering units or customized text automatically displayed
- Buttons allow for scrolling to desired parameter, or can be set for continuous looping of parameters
- DB9 passthrough front port allows direct hookup to M57x IEDS from front of display for easy configuration and file download between IED and PC
- RS-232 connection from M57x IEDs
- Connect two separate M570DA displays to one M57x IED with the use of the adapter accessory
- Mount up to 50 feet (15 meters) from M57x IEDs





Design

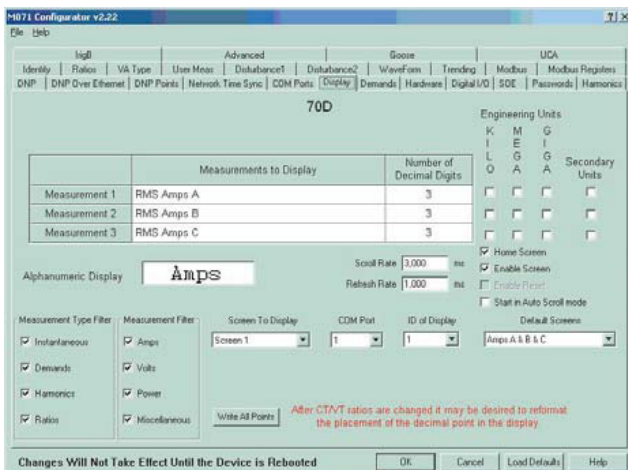
The Bitronics M570DA surface mounts over a standard 4" round or DIN 92mm opening.

Other design features include:

- -40C to +70C operating temperature
- Rugged plastic housing
- Powered from power supply of M57x IED
- Connect two separate M570DA displays to one M57x IED with the adapter accessory



Back view of M570DA with adapter accessory



Configuration of the M570DA with 70 Series Configurator

Configuration

The Bitronics M570DA can be easily configured through the supplied Windows® based 70 Series Configurator.

This provides:

- Selection of parameters to be displayed
- Selection of decimal place
- Ability to add special characters

Contact:

NovaTech, LLC

Bitronics Measurement and Recording

261 Brodhead Road

Bethlehem, PA 18017

T: 610.997.5100

F: 610.997.5450

E: bitronics@novatechweb.com

www.novatechweb.com