



Ethanol and Biofuels Solutions

The strong growth in ethanol, biodiesel and other alternative fuels is a welcome trend.

NovaTech is proud to be a part of this trend and of our contributions to industry and academia alike in the areas of production capacity, plant automation, simulation/training and continuing education programs.

NovaTech provides highly integrated ethanol production automation solutions including grain storage/elevation, grinding, liquification, fermentation, centrifugation, distillation/ evaporation, molecular sieves, product denaturing and loadout in addition to CIP and utility requirements. Our solutions emphasize maximum use of installed equipment, open migration paths, low life cycle support costs and fast, intuitive deployment tools.

Ethanol and Biofuels Training and Education

NovaTech has forged a partnership alliance with Minnesota West Community & Technical College (MN West) to bring world class Ethanol education and training programs to industry and academia alike. While working in collaboration with MN West, NovaTech developed and released a Configurable Ethanol Application (CEA) for automation and simulation/training application. The CEA has since been fully integrated with NovaTechs D/3[®] DCS System for use in MN Wests Renewable Energy Education Program. NovaTech has also shared the application with it industry partners. Moving forward, NovaTech and MN West plan to assist other colleges and universities in establishing successful Renewable Energy Education Programs using the NovaTech Ethanol Training Simulator (NETS) and program curriculum developed by MN West.

Process Automation [back to top](#)

The D/3 DCS is a state-of-the-art process automation system built on a flexible, open architecture. Sequence and Batch Language (SABL[®]) allows for faster development and testing of continuous and sequence process logic and more advanced control capabilities than that offered by a PLC/HMI solution. Most importantly, the investment required for the NovaTech solution is at a comparable price point. A familiar Microsoft Windows operating environment provides easy management and complete control of real-time process information throughout your enterprise.

S88 Batch Management

Effective control of batch manufacturing and product recipes is a biofuel facility's biggest challenge and greatest opportunity for competitive advantage. [FlexBatch™](#) allows you to integrate recipe management and the manufacturing process, accelerating your time to market and improving your bottom line.

Flexbatch has produced:

- 8% increase in throughput
- 20% reduction in batch cycle times
- 5% increase in production yield
- 80% reuse of software

Process Visualization

[TotalVision Process HMI[®]](#) presents real-time data from your entire enterprise in a single vector-based pan and zoom view. Graphics representing pumps, motors, valves, vessels and other equipment alert you to abnormal conditions based on pre-defined logic. Choose from a library of thousands of pre-existing graphics or quickly customize new ones. Updated behaviors are distributed instantly to every operator terminal.

Integrate Islands of Automation

[Orion Automation Platforms](#) combine two decades of protocol emulation experience with intuitive deployment software (NovaTech Communications Director) to interface with isolated legacy PLCs, making D/3 the ideal platform for both new plants and upgrades to existing facilities.

Ethanol Software Screenshots [back to top](#)



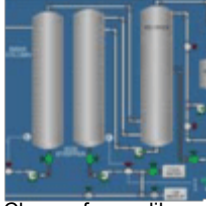
TotalVision[®] graphics let you view your entire plant...

[\(click to enlarge\)](#)



...and drill down to individual components.

[\(click to enlarge\)](#)



Choose from a library of thousand of pre-existing graphics to create operator interfaces for any application including distillation...

[\(click to enlarge\)](#)



...liquifaction...

[\(click to enlarge\)](#)



...Fermentation, and others.

[\(click to enlarge\)](#)

[back to top](#)