

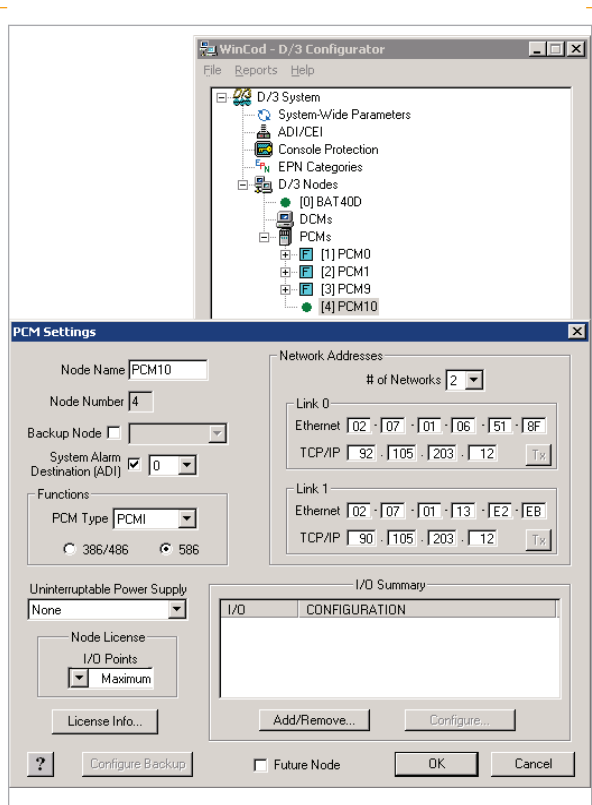
Configuring the D/3® Distributed Control System (DCS) using D/3 Windows configuration utilities is easier than ever. Configuration is mostly a matter of selecting the appropriate options by checking boxes and selecting from pull-down lists.

WinCOD is used to configure system settings; D/3 Architect® is used to configure application settings; and D/3 Manager is used to monitor and manage D/3 processes.

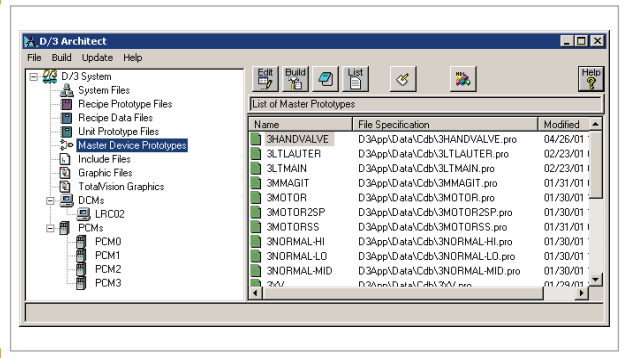
These development tools, based on the conventional Windows interface, make the D/3® easy to configure. These graphical tools create the necessary files to build the system and make extensive use of online and context-sensitive help. The system provides information through drop down lists, radio button selections, transfer lists, message boxes, and menus.

WinCOD

WinCOD is used to configure the D/3® network and its associated components. The utility contains a series of check boxes and dialogs that define the overall D/3 network and each node on the network. As the nodes are defined, online error checking verifies the information supplied and alerts the user to any improper responses by displaying error messages.



WinCOD hierarchy display with the PCM settings dialog box used to configure PCM connections.



D/3® Architect with Master Device Prototypes selected on the left and a list view of Master Device Prototypes on the right.

WinCOD Features

- System-wide parameter configuration
- Online configuration changes
- Node definition & I/O selection
- Alarm routing configuration
- Console protection configuration
- EPN categories configuration
- Console password maintenance
- Verifies and assigns licenses to nodes

D/3® Architect

D/3® Architect provides a hierarchy to navigate through the files used to configure a D/3 system and launch windows or applications for their design, configuration, maintenance, and the building of binary system files. These files include the continuous database, the sequence database, master devices, Sequence and Batch Language (SABL®) programs, TotalVision® graphics, and more. Color-coded icons indicate the readiness of each file in the system. An online Help button appears in the upper right-hand corner of every window/page; clicking this button displays context-sensitive help for the active window/page.

D/3® Architect Features

- D/3® System configuration creation with or without the use of wizards
- Visual indication of source file status
- View online Help
- Create continuous, sequence and display databases
- Configure Foundation Fieldbus, Profibus, AS-Interface and ControlNet devices and access intelligent instrument diagnostic information
- Import and export configuration text files from previous versions

Contact:

NovaTech Process Solutions, LLC
11500 Cronridge Dr., Suite 110
Owings Mills, MD 21117

T: 410.753.8300
Toll Free: 800.253.3842
www.novatechweb.com



D/3® System Configuration

Quick, Intuitive, & Efficient

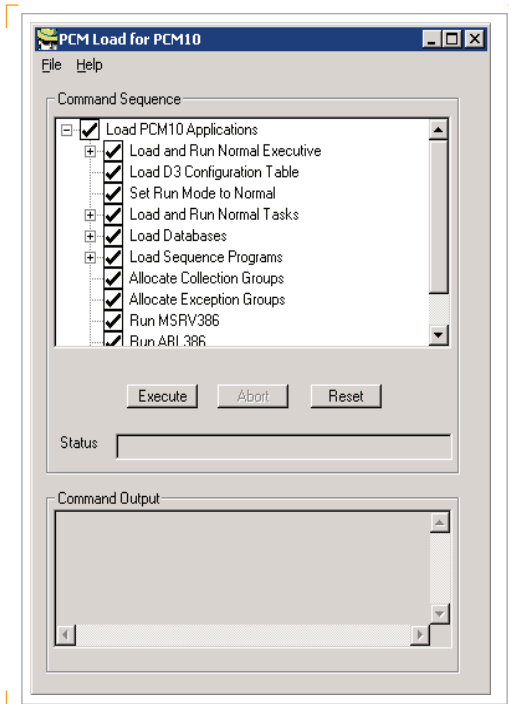
- Graphically design device logic diagrams with the capability to export into a TotalVision® run-time console graphic for online diagnostic purposes
- Integrated logic debugger for master devices
- Integration with Notepad, and editor of choice
- Automatic header file generation for longer, better sequence variable names
- All D/3 utilities incorporate file versioning, therefore all modifications made with D/3 Architect are easily recovered

D/3® Manager

D/3® Manager is a system management tool that allows the user to monitor and update system parameters, load and unload system components, and start or stop processes on the various D/3 nodes. It contains extensive, cross-referenced online and context-sensitive help.

D/3® Manager Features

- Start up and shut down the D/3®, or individual components
- Customize and save the loading sequence for each Process Control Module (PCM) and Display Control Module (DCM)
- Load PCMs and DCMs
- Load Snapshot databases
- Dynamically monitor and display the processing status of the entire D/3 system and individual components
- Display active tasks and maintain log files for diagnostic purposes.
- Modify system task debug level
- Monitor and update system parameters
- Client Server based runtime system administrator
- Monitor or view product tracking, alarm history, batch history, and process logs
- Check permissives based on Windows security model
- Load/swap SABL programs running in PCMs
- Monitor PCM tasks, global regions, and free memory
- Resynchronize redundant PCMs

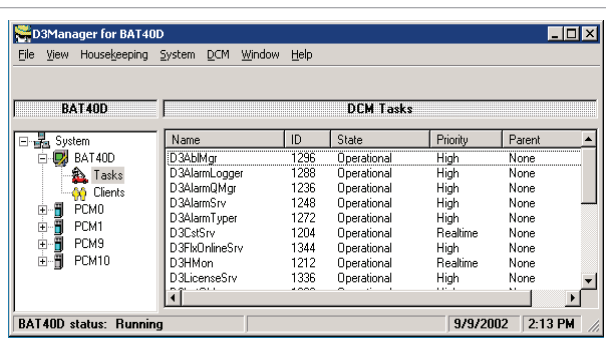


Customizable load sequence with load items selectable at run time.

The D/3® Manager also allows you to access additional windows where you may perform start, stop, restart, run, load, unload, swap and view operations for DCMs and PCMs by selecting components from a Command Sequence box; these components, in turn, execute commands.

D/3® Manager allows you to manually update application files “on the fly” through the DCM Load command option.

- Failover to backup PCM
- Fetch analytical data
- Shut down a PCM
- Load and unload databases
- Load, run, and swap recipe data files
- Load, run, and swap sequence programs



D/3® Manager with DCM Tasks selected on the left and a list view of the DCM's Tasks on the right.

Copyright © 2008 NovaTech, LLC. All rights reserved. All brand and product names mentioned in this document are trademarks of their respective owners. NovaTech is a registered trademark of NovaTech, LLC. The information in this literature is subject to change without notice and is not to be construed as a warranty. DS_D3Configuration_102308

Contact:

NovaTech Process Solutions, LLC
11500 Cronridge Dr., Suite 110
Owings Mills, MD 21117

T: 410.753.8300
Toll Free: 800.253.3842
www.novatechweb.com



D/3® System Configuration